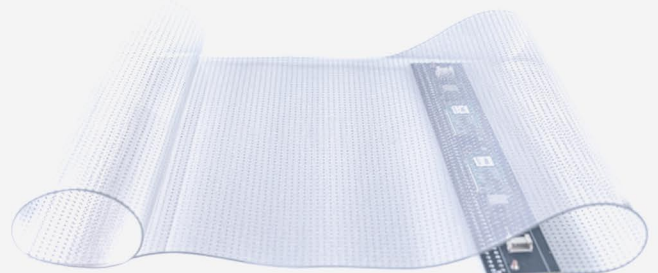
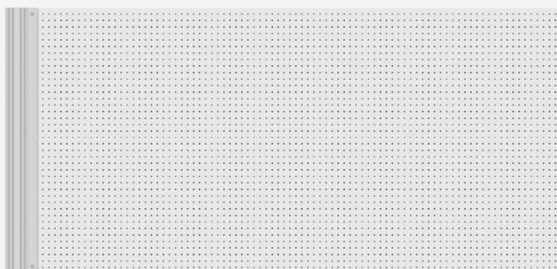


Phantom Series Brochure

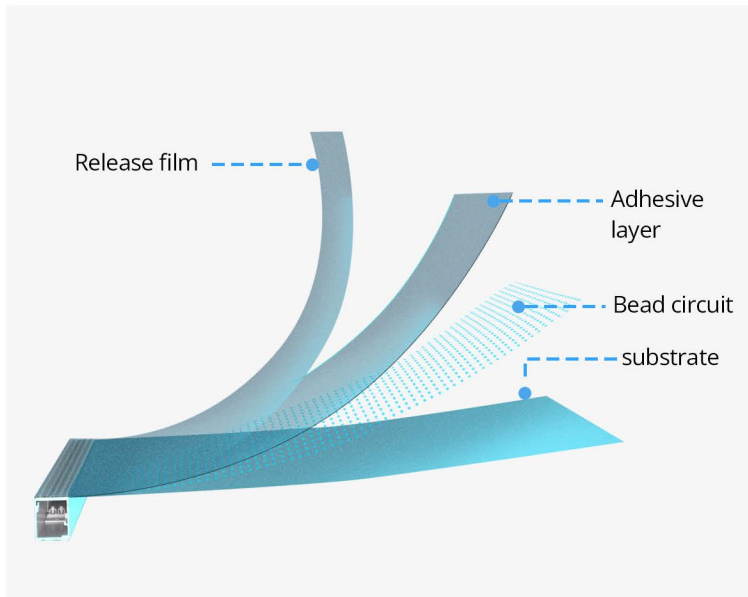
Powered by 16 years of manufacturing experience and robust supply chain resources, EZ LED Visual is dedicated to providing solid and stable LED video display products that enable our clients' designs to shine and amaze their audience. Whether it's information visualization, immersive experiences, mission-critical applications, or interactive display solutions, EZ LED Visual is ready to help you make it happen.

Product Features

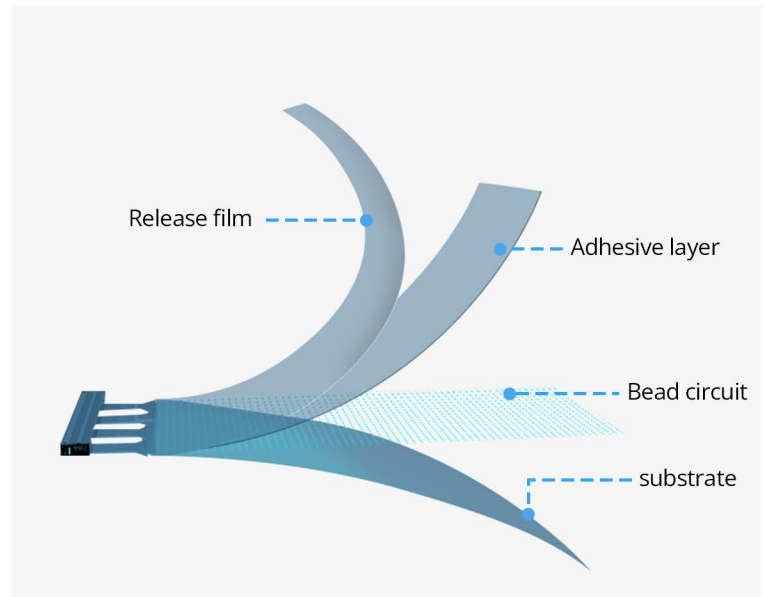
- Pixel pitches: 6mm, 8mm, 10mm, 15mm, 20mm
- Proprietary **Glue & Go Technology** featuring quick viscosity and enhanced adhesiveness without compromising image quality
- Proprietary **Image Clean Technology** that can keep the silica gel substrate clean without turning yellowish over time
- Ultra high see-through rate (over 90%)
- Ultra slim panel design (**ADA Compliant**)
- Ultra light weight design
- Flame retardant and UV resistant
- **Stick and Play** on glass surface with no mounting structure required
- Curvable for concave and convex applications



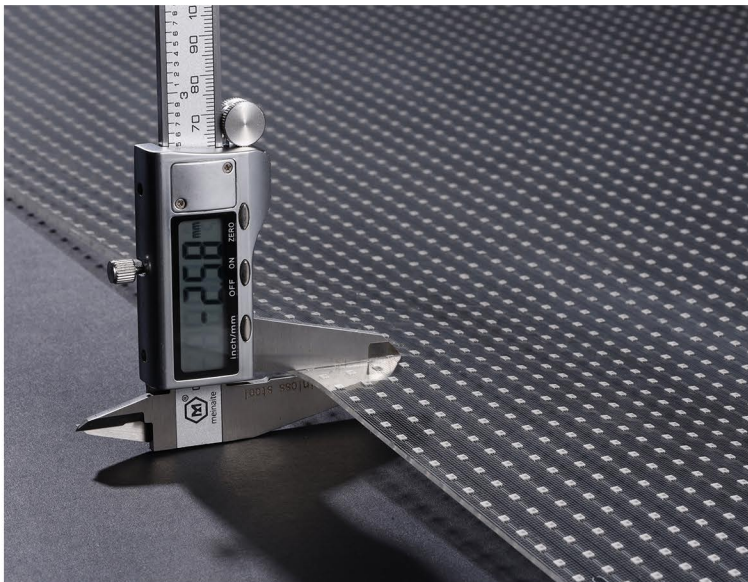
Product Overview



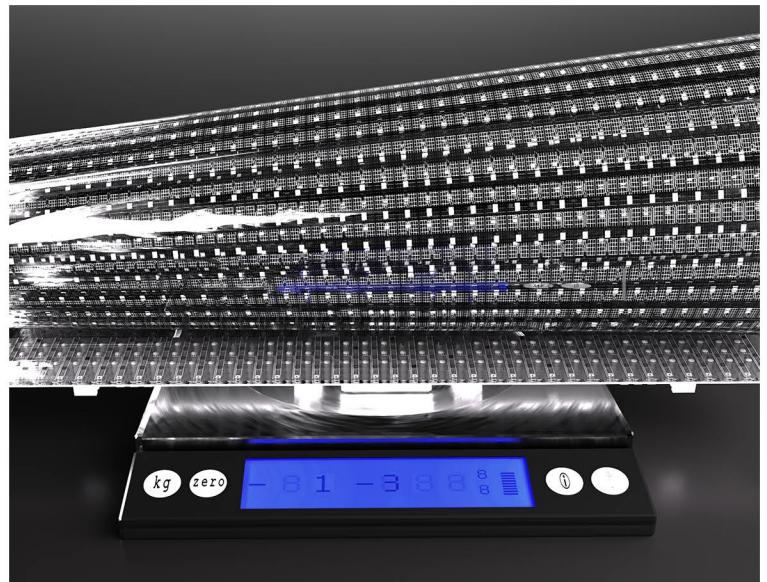
Hard connection



Soft connection(with ribbon cables)



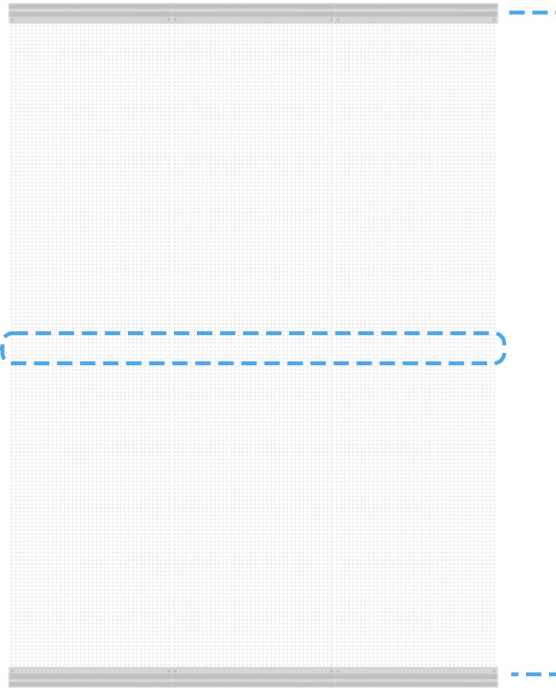
Panel thickness:2.6mm



Panel weight: 1.3KG

Clean Image Options (without Power Bars in the Middle)

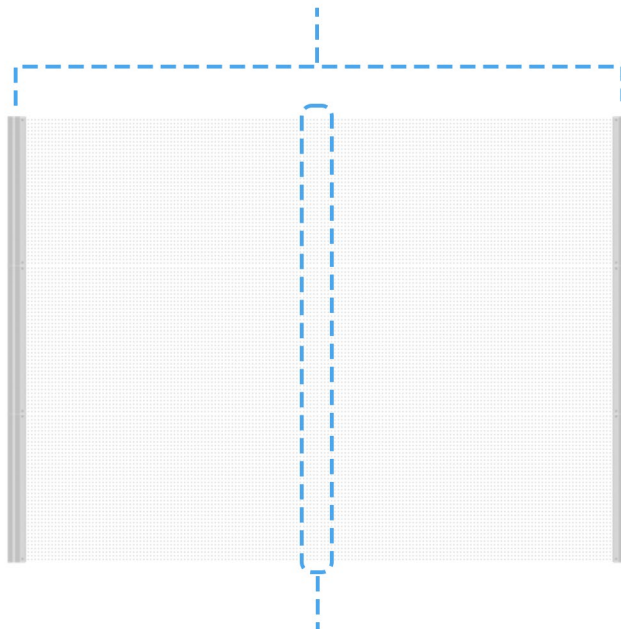
Clean image without
power box in the middle



Option 1: 2 panel high,
unlimited width
Putting power bar on the top
and on the bottom

**Note: This option requires
the height to be 9' or below**

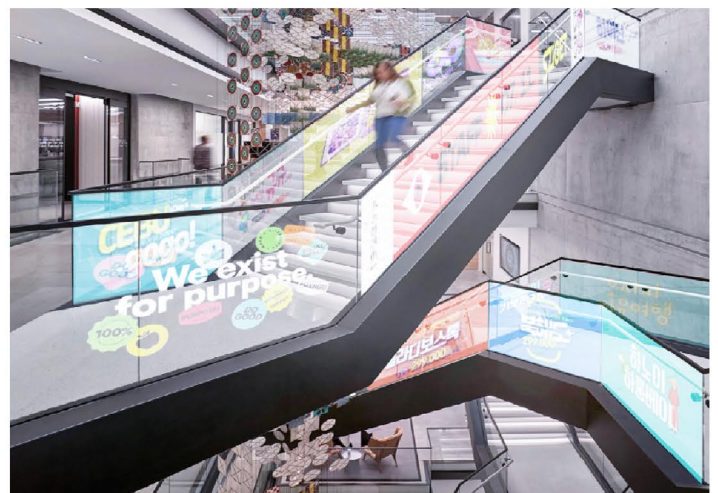
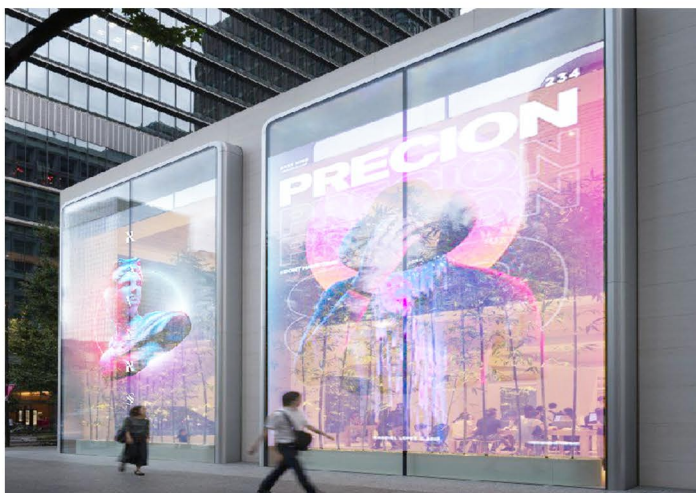
Option 2: 2 panel wide, unlimited height
Putting power bar on the left and on the right
Note: This option requires the width to be 9' or below



Clean image without power box in the middle

Applications

- ① Shopping mall & retail store
- ② Corporate (lobby)
- ③ Entertainment
- ④ Hospitality



Technical Specifications

EZ LED Phantom Series

Product Model	Phantom 6.25mm	Phantom 8mm	Phantom 10mm	Phantom 15mm	Phantom 20mm
Per Panel Resolution	160*64	125*50	100*40	66*26	50*20
LED Type	3-in-1 SMD				
Panel Size (W*H*D)	1000x400x2.6mm / 39.37"x15.75"x0.1"				
Brightness	Standard brightness: 2000 nits				
Brightness	Custom high brightness: 4000 nits				
Refresh Rate	3840 HZ				
Grayscale	16 Bits				
Contrast Ratio	3000 : 1				
View Angle	160° Horizontal / 160° Vertical				
See-through Rate	90%	92%	94%	94%	95%
Installation Access	Rear Install				
Service Access	Rear Service				
Per Panel Weight	1.3 KG / 2.86 LBS				
Per Panel Power Consumption (max)	240W				
Per Panel Power Consumption (typical)	80W				
Brightness Uniformity	>97.5%				
Color Uniformity	>97.5%				
Color Gamut	100% NTSC				
Color Temperature	3,000-10,000 K				
Service Life	100,000 Hours				
Working Voltage	100V-240V Auto-switching				
Operating Temperature (10-90% relative humidity, non-condensing)	-20° to 55° C / -4° to 131° F				

All rights reserved by EZ LED Visual Co.,Ltd.