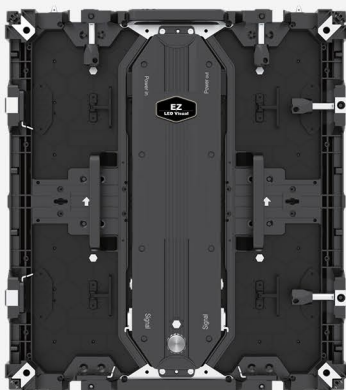


Dynamic Ultra (DU) Series Brochure

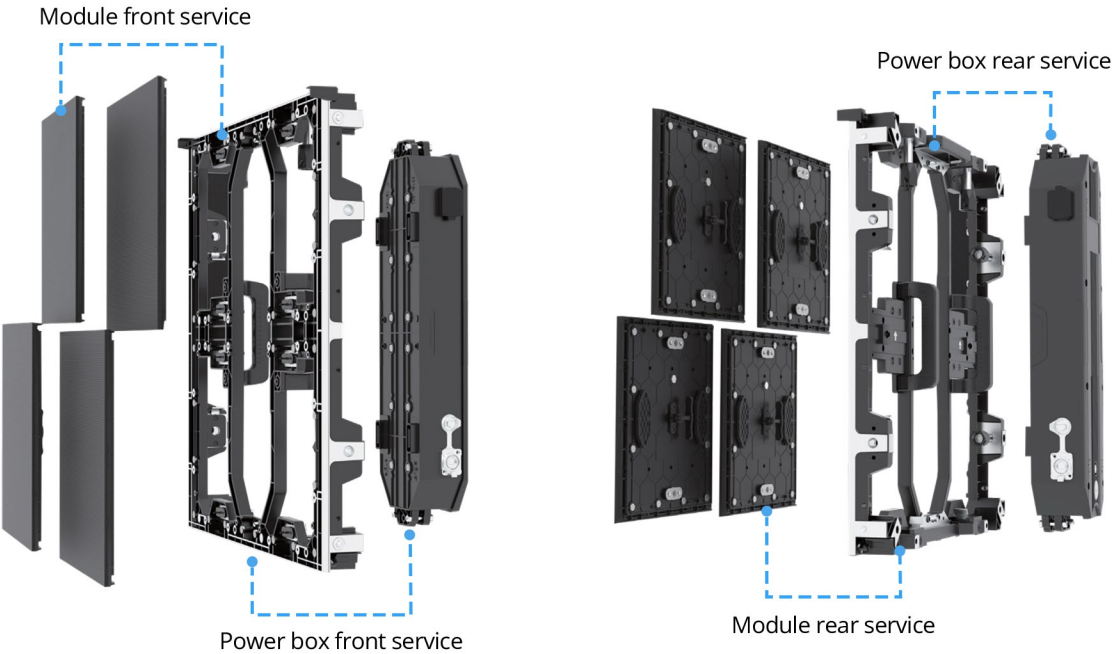
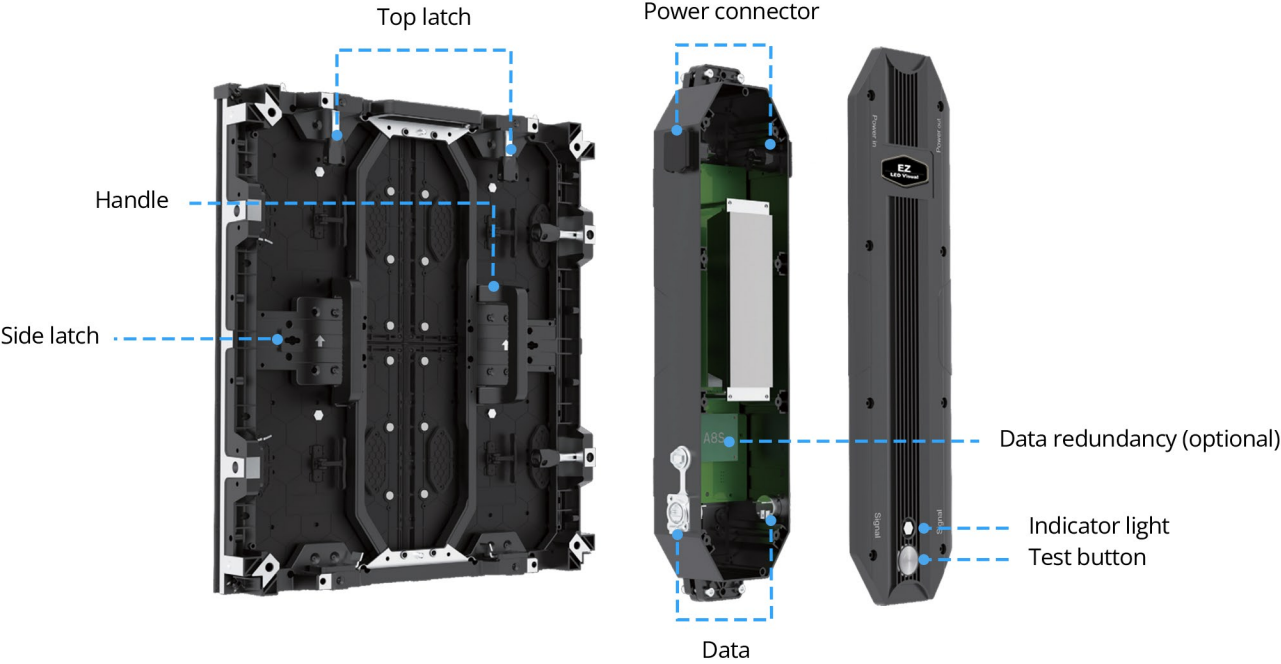
Powered by 16 years of manufacturing experience and robust supply chain resources, EZ LED Visual is dedicated to providing solid and stable LED video display products that enable our clients' designs to shine and amaze their audience. Whether it's information visualization, immersive experiences, mission-critical applications, or interactive display solutions, EZ LED Visual is ready to help you make it happen.

Product Features

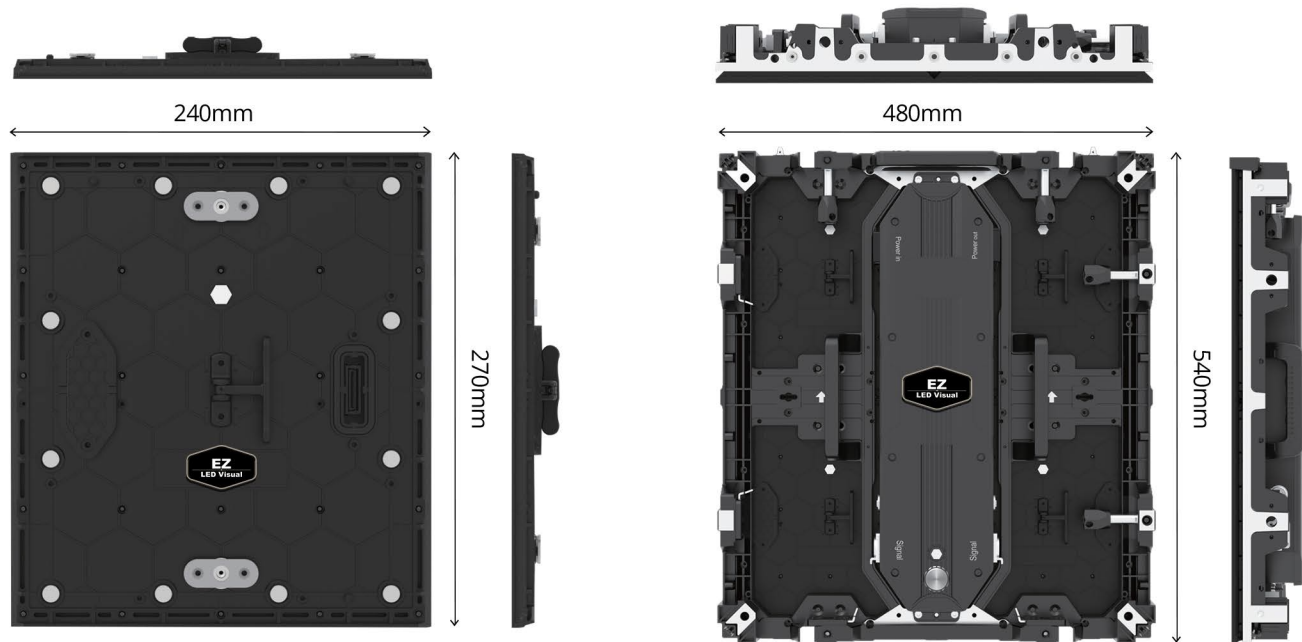
- Pixel pitches (outdoor): 1.5mm, 1.8mm, 2.5mm
- **Dynamic Pro Technology** supported by high brightness, high refresh, and high grayscale
- All-weather IP65 rated
- Native 8:9 panel compatible with all major 16:9 aspect ratio formats (2K, 4K, 8K, etc)
- Integrated power box featuring power supply, receiving card and hub board 3-in-1 design to enable quick replacement
- Slim panel design (**ADA Compliant**)
- Hanging, wall mounting, and floor standing compatible
- Module and power box front/rear serviceable
- Curvable for concave & convex applications (panel-based faceted curve)
- Data redundancy available (optional)
- Custom 90-degree corner solution available
- Naked eye 3D compatible



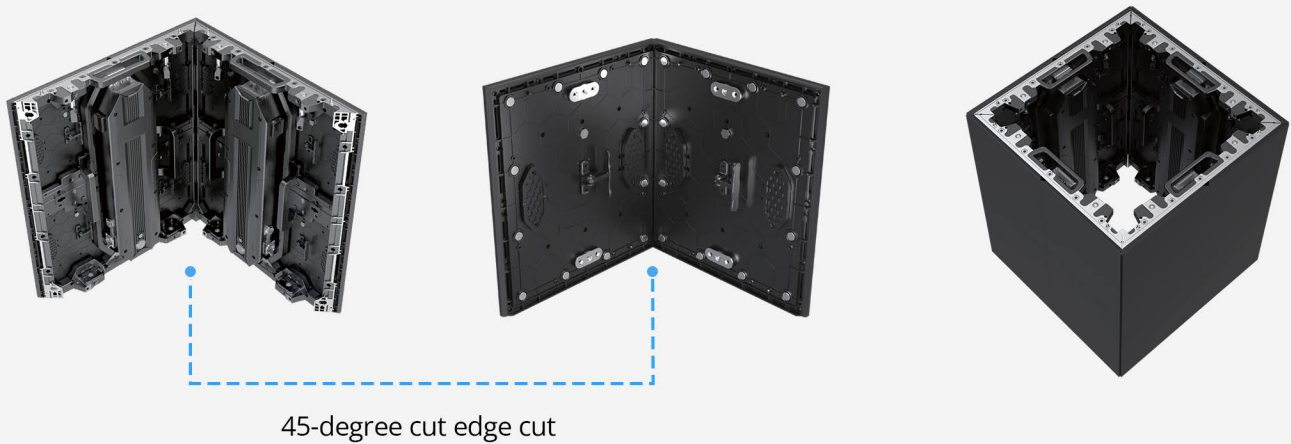
Product Overview



Module & Panel Dimensions



90 Degree Corner Solution



Dynamic Pro Technology

- High brightness



High brightness



Low brightness

- High refresh



High refresh



Low refresh

- High grayscale

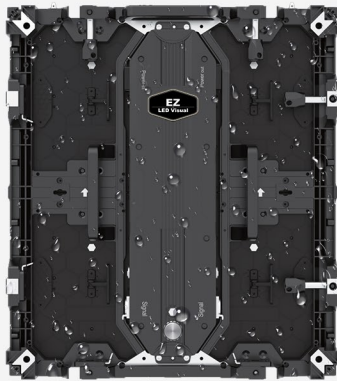
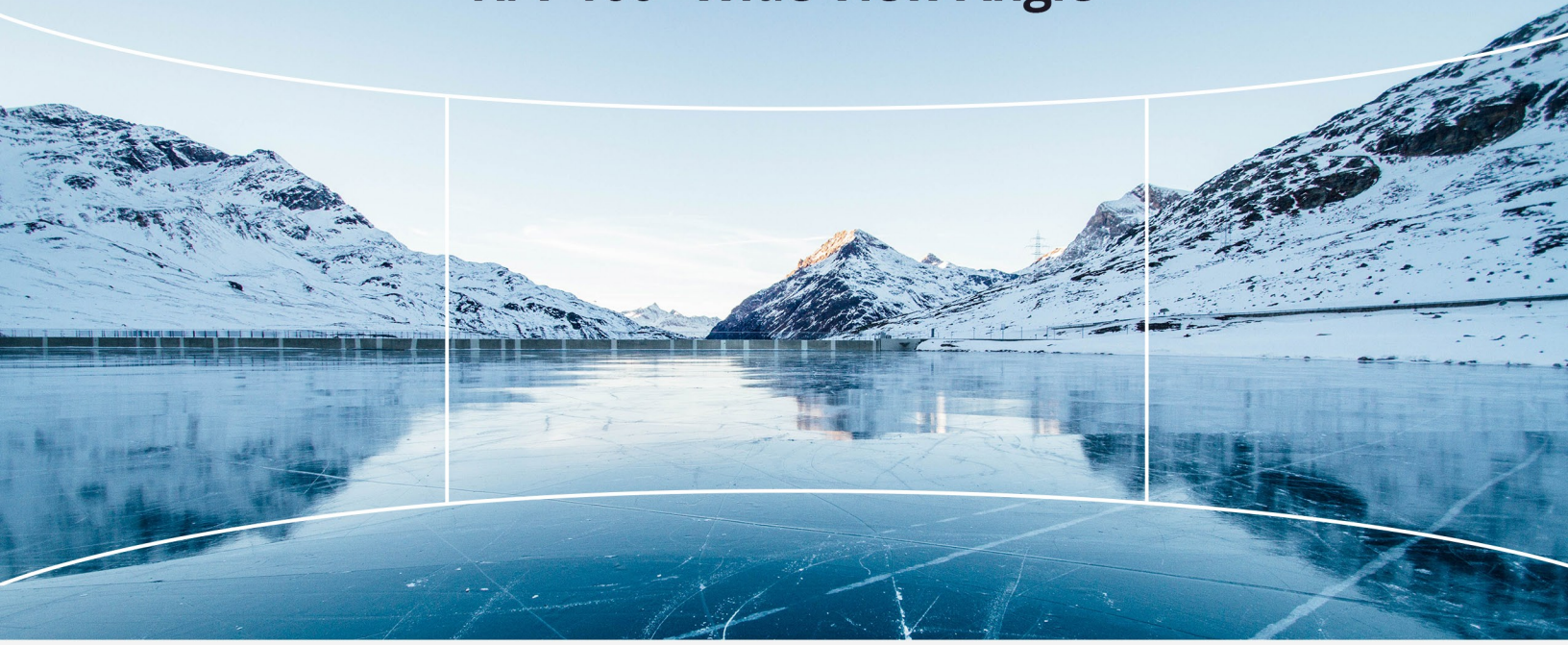


High grayscale



Low grayscale

H/V 160° Wide View Angle



IP65 for both front
and back side

- Standard 2K Options

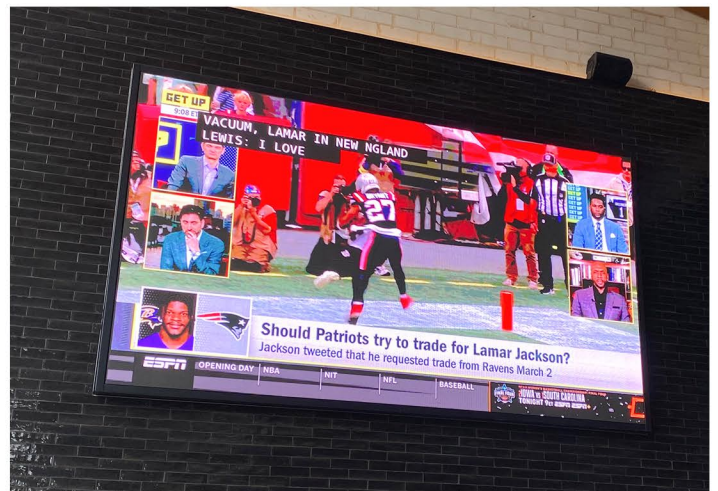
Product Model	Panel Array	Resolution	Diagonal
DU 1.5mm	6x3	1920x1080 (FULL HD)	130"
DU 1.8mm	8x4	2048x1152	174"
DU 2.5mm	10x5	1920x1080 (FULL HD)	217"

- Standard 4K Options

Product Model	Panel Array	Resolution	Diagonal
DU 1.5mm	12x6	3840x2160 (4K)	260"
DU 1.8mm	16x8	4096x2304	348"
DU 2.5mm	20x10	3840x2160 (4K)	414"

Applications

- ① Digital Signage (DOOH)
- ② Naked Eye 3D
- ③ Commercial property
- ④ High-end retail
- ⑤ Corporate
- ⑥ Entertainment
- ⑦ Hospitality
- ⑧ Education



Technical Specifications

EZ LED Dynamic Ultra (DU) Series

Product Model	DU 1.5mm	DU1.8mm	DU2.5 mm
Panel Size (W*H*D)-mm	480x540x66mm / 18.9"x21.26"x2.6"		
Per Panel Resolution	320*360	256*288	192*216
LED Type	3-in-1 SMD		
Brightness	4000 nits		
Refresh Rate	1920-3840 HZ		
Grayscale	14 bit		
Contrast Ratio	4000 : 1		
View Angle	160° Horizontal / 160° Vertical		
Installation Access	Front Install / Rear Install		
Service Access	Front Service / Rear Service		
Panel Material	Aluminum		
Per Panel Weight	9.5 KG/ 20.9 LBS		
Per Panel Power Consumption (max)	190W		
Per Panel Power Consumption (typical)	56W		
Brightness Uniformity	>97.5%		
Color Uniformity	>97.5%		
Color Gamut	100% NTSC		
Color Temperature	3,000-10,000 K		
Service Life	100,000 Hours		
Working Voltage	100V-240V Auto-switching		
Operating Temperature (10-85% relative humidity, non-condensing)	-20° to 50° C / -4° to 122° F		

All rights reserved by EZ LED Visual Co.,Ltd.