

# Ultra-X Series Brochure

Powered by 16 years of manufacturing experience and robust supply chain resources, EZ LED Visual is dedicated to providing solid and stable LED video display products that enable our clients' designs to shine and amaze their audience. Whether it's information visualization, immersive experiences, mission-critical applications, or interactive display solutions, EZ LED Visual is ready to help you make it happen.

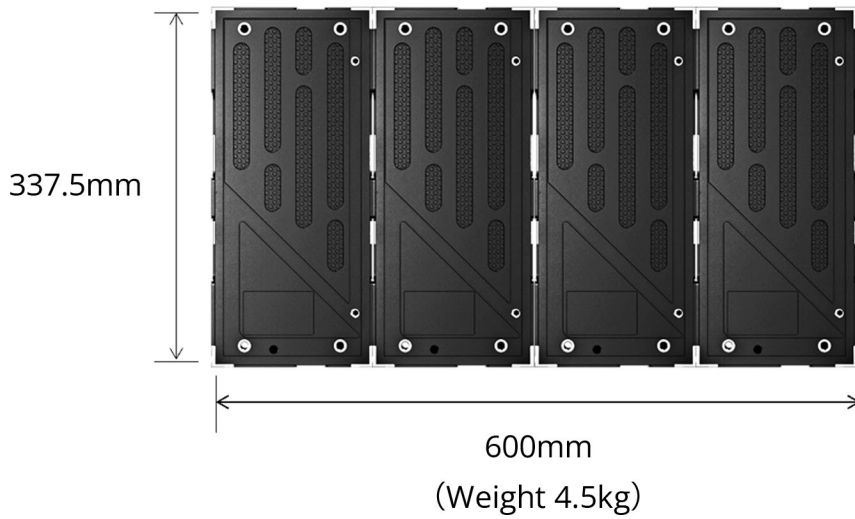
## Product Features

- Pixel pitches: 0.7mm, 0.9mm, 1.2mm, 1.5mm
- **Pro-clarity Technology** supported by 6000:1 contrast, 3840HZ refresh, and 16+ bit grayscale
- Native 16:9 aspect ratio for pixel-to-pixel match on 2K and 4K resolution
- Module-based auto-calibration (on-board flash memory)
- Power/data redundancy available for mission critical applications
- Slim panel design (**ADA Compliant**)
- Wall mounting, floor standing, and hanging compatible
- Front serviceable and front installable
- Curvable for concave and convex applications (module-based faceted curve)
- Custom 90-degree corner solution available
- GOB compatible (optional)
- Infrared-based touch function compatible (optional)
- HDR compatible

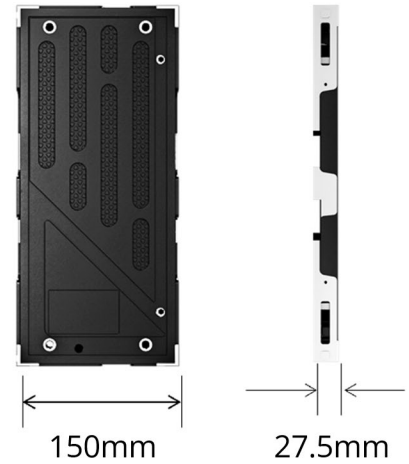


# Product Overview

## ● Panel Size



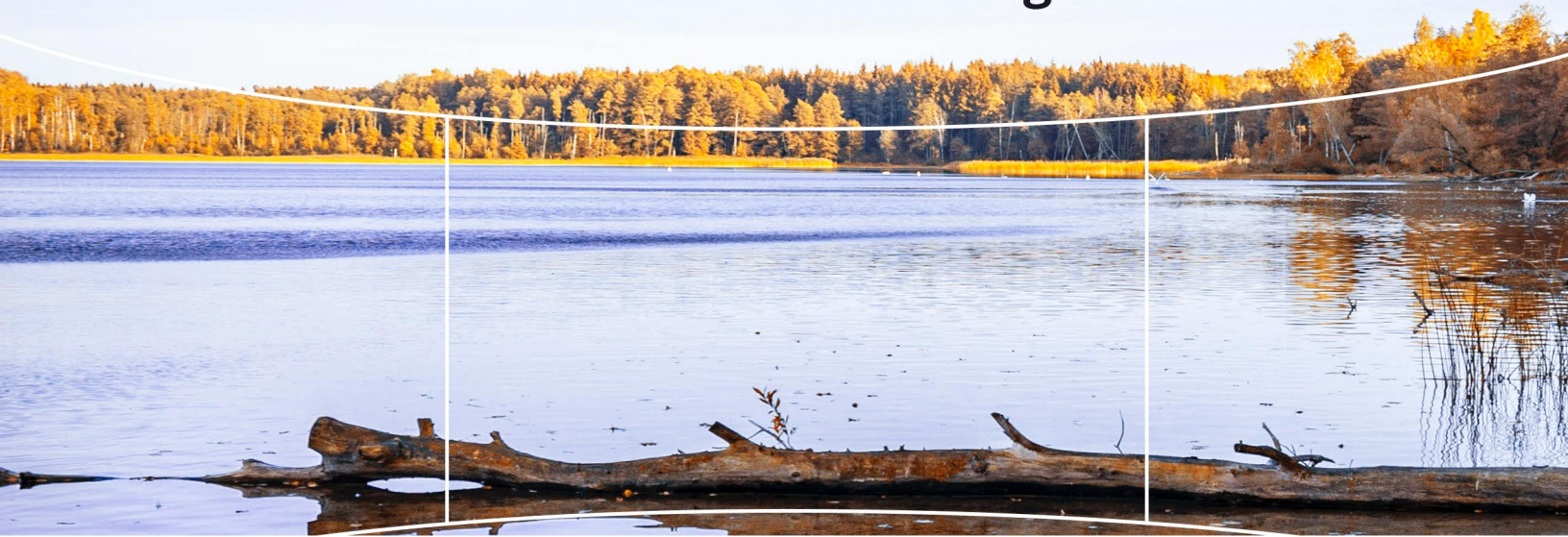
## ● Module Size



## Curvability



## H/V 170° Wide View Angle



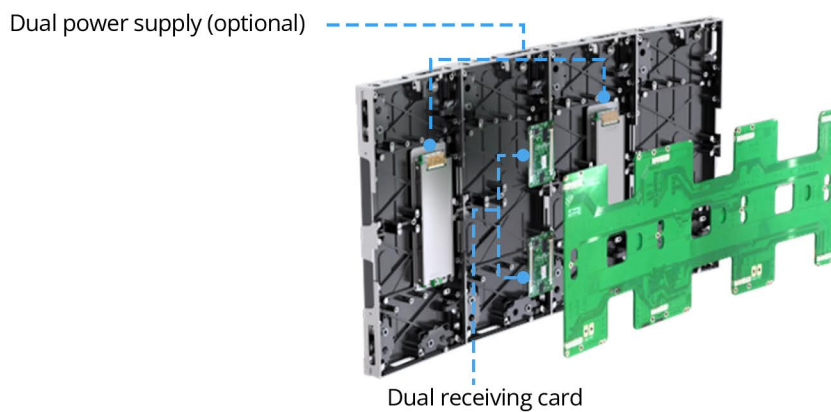
- **Front Service**

Every single component can be accessed and serviced from the front



- **Power & Data Redundancy (optional)**

Power and data redundancy are available for interrupted operation





# Applications

- ① Corporate  
(board room/meeting room, lobby, showroom)
- ② Control room
- ③ Broadcast
- ④ Entertainment
- ⑤ Hospitality
- ⑥ Education
- ⑦ High-end retail
- ⑧ Mega churches
- ⑧ Residential (home theater)



# Technical Specifications

## EZ LED Ultra-X Series

Product Model	Ultra-X 0.7mm	Ultra-X 0.9mm	Ultra-X 1.2mm	Ultra-X 1.5mm
Per Panel Resolution	768*432	640*360	480*270	384*216
Panel Size (W*H*D)	600*337.5*27.5mm / 23.62"x13/29"x1.08"			
Per Module Resolution	192*216	160*180	120*270	96*216
Module Size (W*H)	150x168.75mm/5.9"x6.64"			
LED Type	Mini-LED		3-in-1 SMD	
Per Panel Diagonal	27"			
Brightness	600 nits		600-800 nits	
Refresh Rate	3840 HZ			
Grayscale	16 Bits			
Contrast Ratio	6000 : 1			
View Angle	170° Horizontal / 170° Vertical			
Installation Access	Front Install / Rear Install			
Service Access	Front Service			
Per Panel Weight	4.5 KG / 9.9 LBS			
Per Panel Power Consumption (max)	135W	135W	130W	128W
Per Panel Power Consumption (typical)	40W	40W	38W	36W
Per Panel Heat Output (max)	460 BTU/H	460 BTU/H	440 BTU/H	435 BTU/H
Per Panel Heat Output (typical)	135 BTU/H	135 BTU/H	130 BTU/H	120 BTU/H
Brightness Uniformity	>98.5%			
Color Uniformity	>98.5%			
Color Gamut	100% NTSC			
Color Temperature	3,000-10,000 K			
Service Life	100,000 Hours			
Working Voltage	100V-240V Auto-switching			
Operating Temperature (10-85% relative humidity, non-condensing)	-20° to 40° C / -4° to 104° F			

All rights reserved by EZ LED Visual Co.,Ltd.