

Dynamic Block (DB) Series Brochure

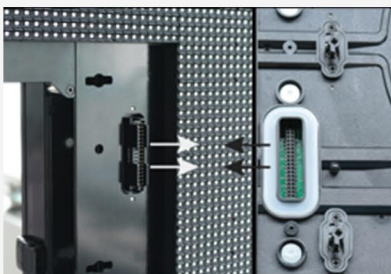
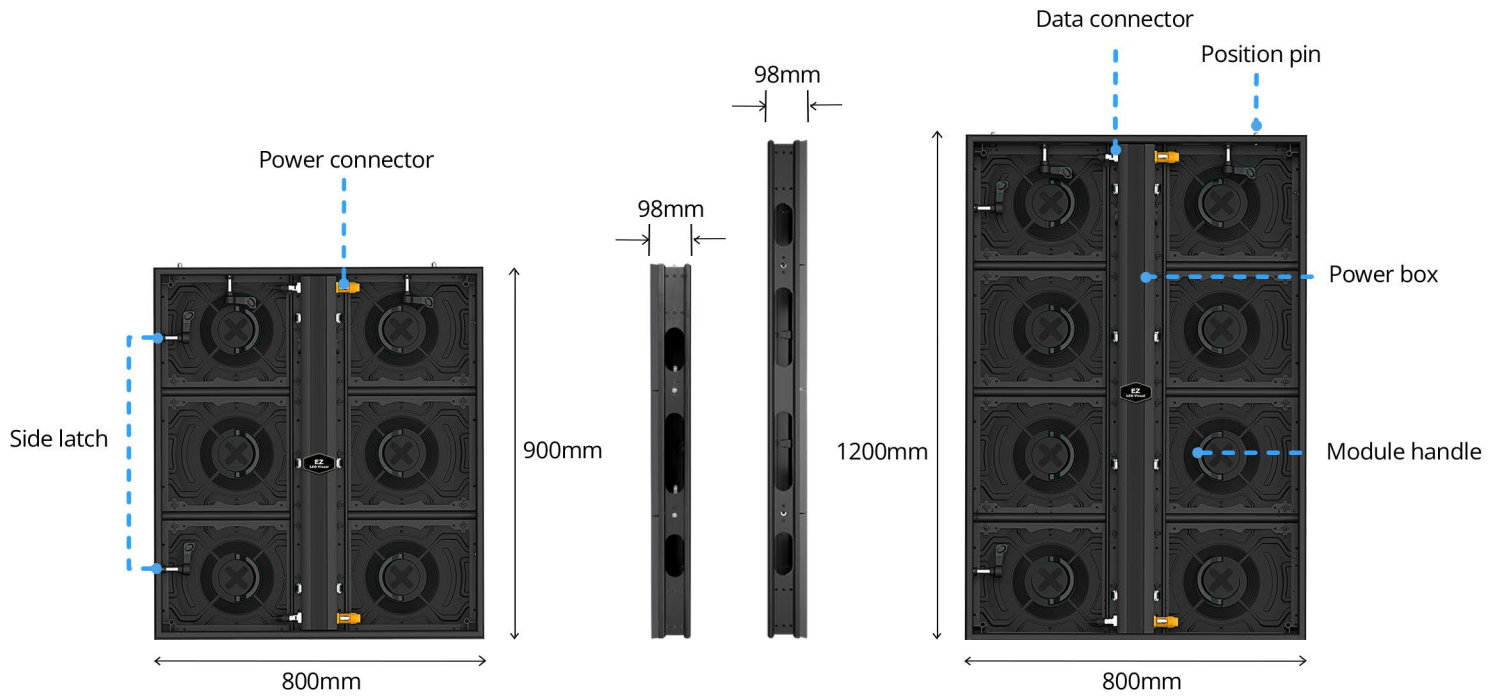
Powered by 16 years of manufacturing experience and robust supply chain resources, EZ LED Visual is dedicated to providing solid and stable LED video display products that enable our clients' designs to shine and amaze their audience. Whether it's information visualization, immersive experiences, mission-critical applications, or interactive display solutions, EZ LED Visual is ready to help you make it happen.

Product Features

- Pixel pitches: 3.125mm, 4.16mm, 5mm, 6.25mm, 8.33mm, 10 mm
- **Dynamic Pro Technology** supported by high brightness, high refresh, and high grayscale
- All-weather IP65 rated
- Light weight design
- Slim panel design
- Quick locking system to enable fast install
- Wall mounting, floor standing, and hanging compatible
- Wall-mount-free install (LED wall size 60'x35' or below)
- Front serviceable and front installable
- Curvable for concave & convex applications (panel-based faceted curve)
- Custom 90-degree corner and curve corner solution available (optional)
- Naked eye 3D compatible

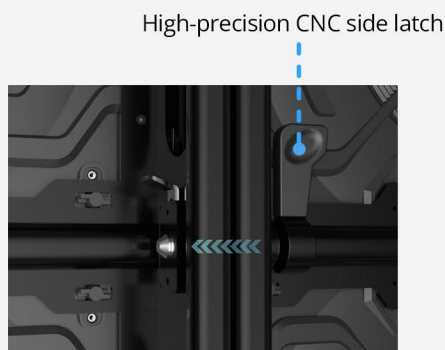


Product Overview



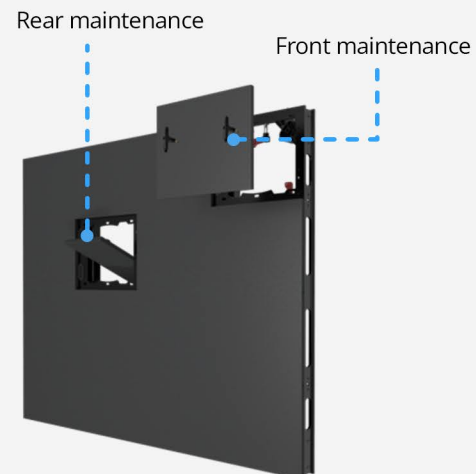
Hot-swappable

Hard connection supports hot-swapping without interrupting the rest of the LED wall.



Fast installation

Side latches featuring quick locking mechanism ensures fast install.



Front and Rear maintenance

Dynamic Pro Technology

- High brightness



High brightness



Low brightness

- High refresh



High refresh



Low refresh

- High grayscale

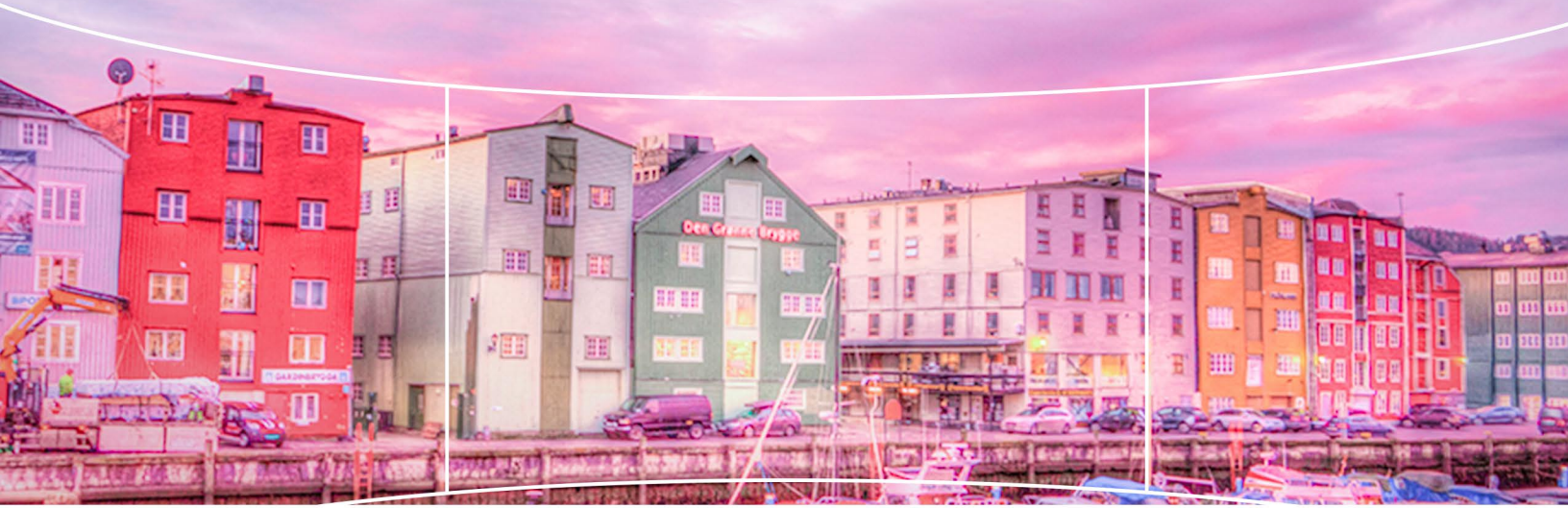


High grayscale



Low grayscale

H/V 160° Wide View Angle



- Weight is 35% lighter



800X900 | 17.5kg



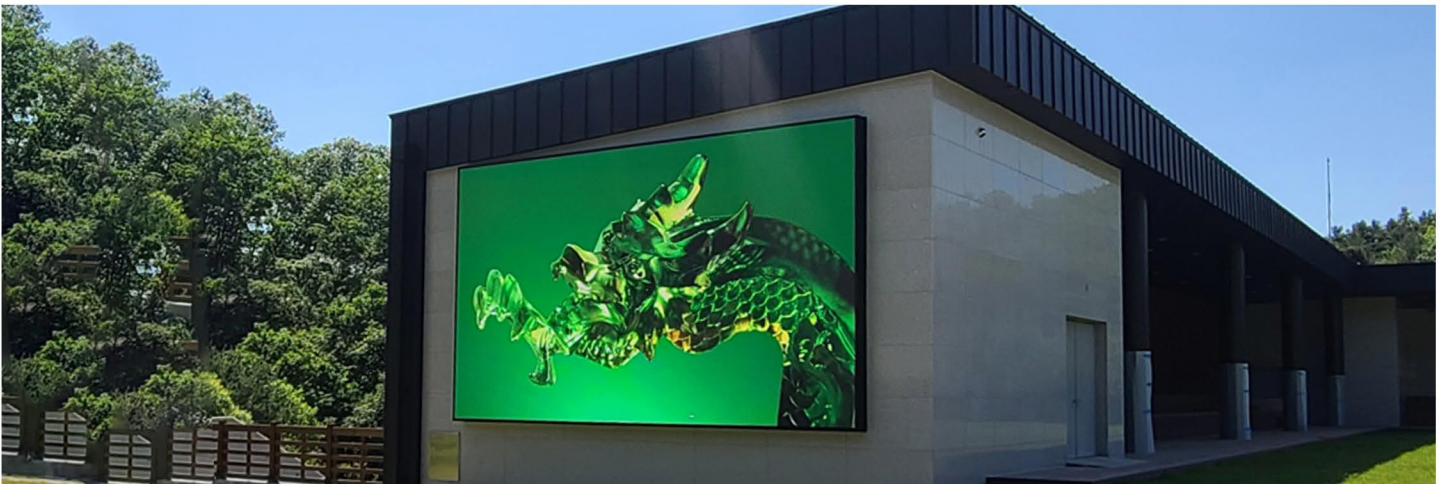
800X1200 | 22.5kg

- IP65 for both front and back side



Applications

- ① Digital Signage (DOOH)
- ② Naked Eye 3D
- ③ Commercial Property
- ④ Sports Stadium Perimeter Banner
- ⑤ Corporate
- ⑥ Entertainment
- ⑦ Hospitality
- ⑧ Education



Technical Specifications

EZ LED Dynamic Block (DB) Series

Product Model	DB 3.125mm		DB 4.16mm		DB 5mm	
	Panel A	Panel B	Panel A	Panel B	Panel A	Panel B
Panel Size (W*H*D)-mm	800x900x98mm	800x1200x98	800x900x98mm	800x1200x98	800x900x98mm	800x1200x98
Panel Size (W*H*D)-inch	31.5"x35.4"x3.85"	31.5"x47.24"x3.85"	31.5"x35.4"x3.85"	31.5"x47.24"x3.85"	31.5"x35.4"x3.85"	31.5"x47.24"x3.85"
Per Panel Resolution	256*288	256*384	192*216	192*288	160*180	160*240
Per Panel Weight	17.5 KG/ 38.5 LBS	22.5 KG / 49.5 LBS	17.5 KG/ 38.5 LBS	22.5 KG / 49.5 LBS	17.5 KG/ 38.5 LBS	22.5 KG / 49.5 LBS
Per Panel Power Consumption (max)	576W	768W	576W	768W	576W	768W
Per Panel Power Consumption (typical)	216W	288W	216W	288W	216W	288W

Product Model	DB 6.25mm		DB 8.33mm		DB 10mm	
	Panel A	Panel B	Panel A	Panel B	Panel A	Panel B
Panel Size (W*H*D)-mm	800x900x98mm	800x1200x98	800x900x98mm	800x1200x98	800x900x98mm	800x1200x98
Panel Size (W*H*D)-inch	31.5"x35.4"x3.85"	31.5"x47.24"x3.85"	31.5"x35.4"x3.85"	31.5"x47.24"x3.85"	31.5"x35.4"x3.85"	31.5"x47.24"x3.85"
Per Panel Resolution	128*144	128*192	96*108	96*144	80*90	80*120
Per Panel Weight	17.5 KG/ 38.5 LBS	22.5 KG / 49.5 LBS	17.5 KG/ 38.5 LBS	22.5 KG / 49.5 LBS	17.5 KG/ 38.5 LBS	22.5 KG / 49.5 LBS
Per Panel Power Consumption (max)	576W	768W	576W	768W	576W	768W
Per Panel Power Consumption (typical)	216W	288W	216W	288W	216W	288W

Product Model	DB 3.125mm	DB 4.16mm	DB 5mm	DB 6.25mm	DB 8.33mm	DB 10mm
LED Type	3-in-1 SMD					
Brightness	5000 nits		6000 nits		6500 nits	
Refresh Rate	2880-3840 HZ					
Grayscale	14-16 bit					
Contrast Ratio	5000 : 1					
View Angle	160° Horizontal / 160° Vertical					
Installation Access	Front Install / Rear Install					
Service Access	Front Service / Rear Service					
Panel Material	Aluminum					
Brightness Uniformity	>97.5%					
Color Uniformity	>97.5%					
Color Gamut	100% NTSC					
Color Temperature	3,000-10,000 K					
Service Life	100,000 Hours					
Working Voltage	100V-240V Auto-switching					
Operating Temperature (10-85% relative humidity, non-condensing)	-20° to 50° C / -4° to 122° F					

All rights reserved by EZ LED Visual Co.,Ltd.