

# RS Series Brochure

Powered by 14 years of manufacturing experience and robust supply chain resources, EZ LED Visual is dedicated to providing solid and stable LED video display products that enable our clients' designs to shine and amaze their audience. Whether it's information visualization, immersive experiences, mission-critical applications, or interactive display solutions, EZ LED Visual is ready to help you make it happen.

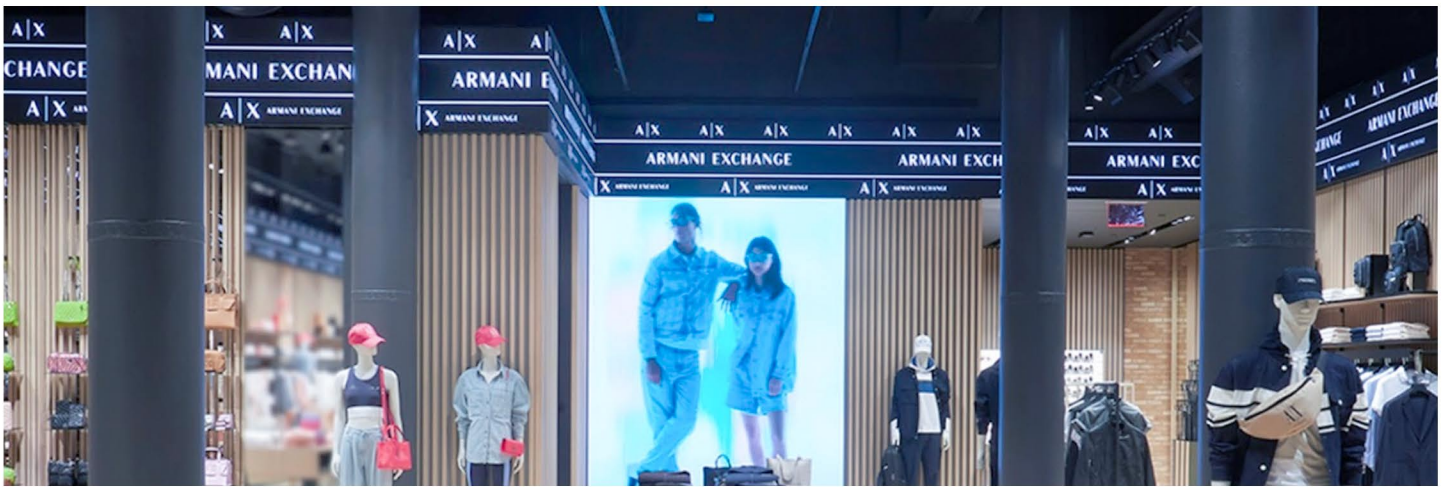
## Product Features

- Pixel pitches: 1.5mm, 1.9mm, 2.5mm, 2.6mm, 2.9mm, 3.9mm
- Free combination of three panel sizes to fit different dimensions
- Free panel orientation layout: landscape and portrait
- Slim panel design (**ADA Compliant**)
- Light-weight design
- Custom 90-degree corner solution available
- Wall mounting, floor standing, and hanging compatible
- Wall-mount-free install (LED wall size 16'x9' or below)
- Front serviceable and front installable
- Mature solution for LED banner or ribbon install
- Custom high-brightness available for high ambient lighting conditions
- GOB compatible (optional)
- Infrared-based touch function compatible (optional)



# Applications

- ① Retail
- ② House of worship
- ③ Education
- ④ Entertainment
- ⑤ Hospitality
- ⑥ Corporate (lobby, showroom)



# Multiple Panel Sizes and Flexible Layout

- Three panel sizes available



- Flexible panel layout: landscape & portrait





# Versatile Installation



Hanging



Wall Mounting



Banner & Ribbon



Column Wrap

# Technical Specifications

## EZ LED RS Series

Product Model	RS 1.5mm (GOB)			RS 1.9mm			RS 2.5mm		
	Panel A	Panel B	Panel C	Panel A	Panel B	Panel C	Panel A	Panel B	Panel C
Panel Size (W*H*D)	1000x250x33mm	750x250x33mm	500x250x33mm	1000x250x33mm	750x250x33mm	500x250x33mm	1000x250x33mm	750x250x33mm	500x250x33mm
	39.37"x9.84"x1.3"	29.53"x9.84"x1.3"	19.68"x9.84"x1.3"	39.37"x9.84"x1.3"	29.53"x9.84"x1.3"	19.68"x9.84"x1.3"	39.37"x9.84"x1.3"	29.53"x9.84"x1.3"	19.68"x9.84"x1.3"
Per Panel Weight	5.8 KG	4.35 KG	2.9 KG	5.8 KG	4.35 KG	2.9 KG	5.8 KG	4.35 KG	2.9 KG
	12.76 LBS	9.57 LBS	6.38 LBS	12.76 LBS	9.57 LBS	6.38 LBS	12.76 LBS	9.57 LBS	6.38 LBS
Per Panel Resolution	640x160	480x160	320x160	512x128	384x128	256x128	400x100	300x100	200x100
Brightness	600 nits			600 nits			600-800 nits		

Product model	RS 2.6mm			RS 2.9mm			RS 3.9mm		
	Panel A	Panel B	Panel C	Panel A	Panel B	Panel C	Panel A	Panel B	Panel C
Panel Size (W*H*D)	1000x250x33mm	750x250x33mm	500x250x33mm	1000x250x33mm	750x250x33mm	500x250x33mm	1000x250x33mm	750x250x33mm	500x250x33mm
	39.37"x9.84"x1.3"	29.53"x9.84"x1.3"	19.68"x9.84"x1.3"	39.37"x9.84"x1.3"	29.53"x9.84"x1.3"	19.68"x9.84"x1.3"	39.37"x9.84"x1.3"	29.53"x9.84"x1.3"	19.68"x9.84"x1.3"
Per Panel Weight	5.8 KG	4.35 KG	2.9 KG	5.8 KG	4.35 KG	2.9 KG	5.8 KG	4.35 KG	2.9 KG
	12.76 LBS	9.57 LBS	6.38 LBS	12.76 LBS	9.57 LBS	6.38 LBS	12.76 LBS	9.57 LBS	6.38 LBS
Per Panel Resolution	384x96	288x96	192x96	336x84	252x84	168x84	256x64	192x64	128x64
Brightness	600-800 nits			600-800 nits			600-800 nits		

### Product model (RS 1.5mm /RS 1.9mm /RS 2.5mm /RS 2.6mm /RS 2.9mm /RS 3.9mm)

	Panel A	Panel B	Panel C
Per Panel Power Consumption (max)	160W	128W	96W
Per Panel Power Consumption (typical)	50W	40W	30W
LED Type	3-in-1 SMD		
Refresh Rate	3840 HZ		
Grayscale	14-16 Bits		
Contrast Ratio	6000 : 1		
View Angle	170° Horizontal / 170° Vertical		
Installation Access	Front Install		
Service Access	Front Service		
Brightness Uniformity	>97.5%		
Color Uniformity	>97.5%		
Color Gamut	100% NTSC		
Color Temperature	3,000-10,000 K		
Service Life	100,000 Hours		
Working Voltage	100V-240V Auto-switching		
Operating Temperature (10-85% relative humidity, non-condensing)	-20° to 40° C / -4° to 104° F		

All rights reserved by EZ LED Visual Co.,Ltd.